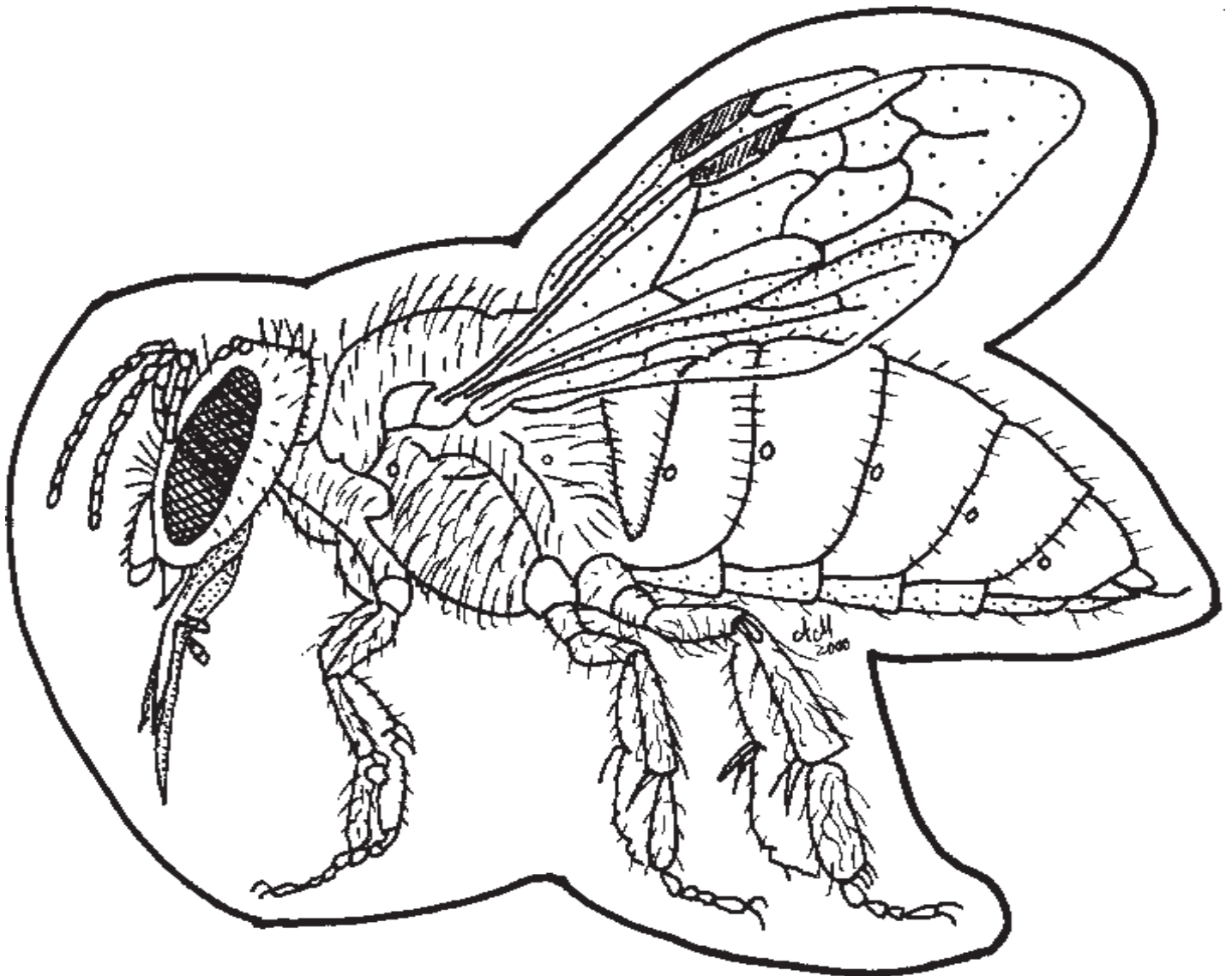
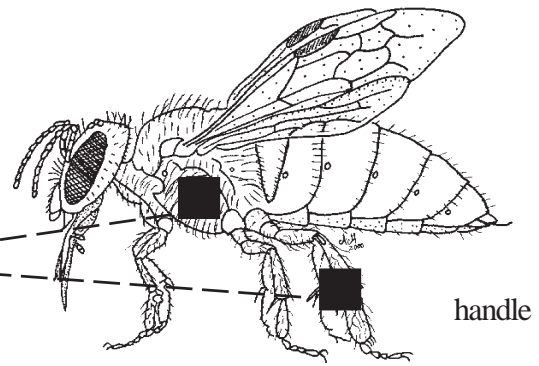


BEE

INSTRUCTIONS

- 1) Cut out the animal pattern along the outer dark line.
- 2) Color the animal.
- 3) Cut two pieces of velcro about this big and stick them to the body of the animal like this.
- 4) Tape a popsicle stick or ruler to the back of the animal picture to use as a handle.
- 5) Cut out and tape the Pollination Clues to the back of the animal picture.



POLLINATION CLUES (BEE)

I am attracted to pink, yellow, purple or blue flowers.

I do not see red.

I see ultraviolet colors.

BEE FLOWER

INSTRUCTIONS

1) Cut out the flower pattern along the outer dark line.

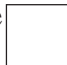
2) Color the flower:

- Color the flower petals purple or blue.
- Color the sepals green.
- Make the dots in the center of the flower bright yellow or pink.

3) Make the pistil:

- Cut out the part labeled “pistil” and color it green or yellow.
- Fold the pistil along the dotted lines.

• Tape the wide end to the center of the flower.

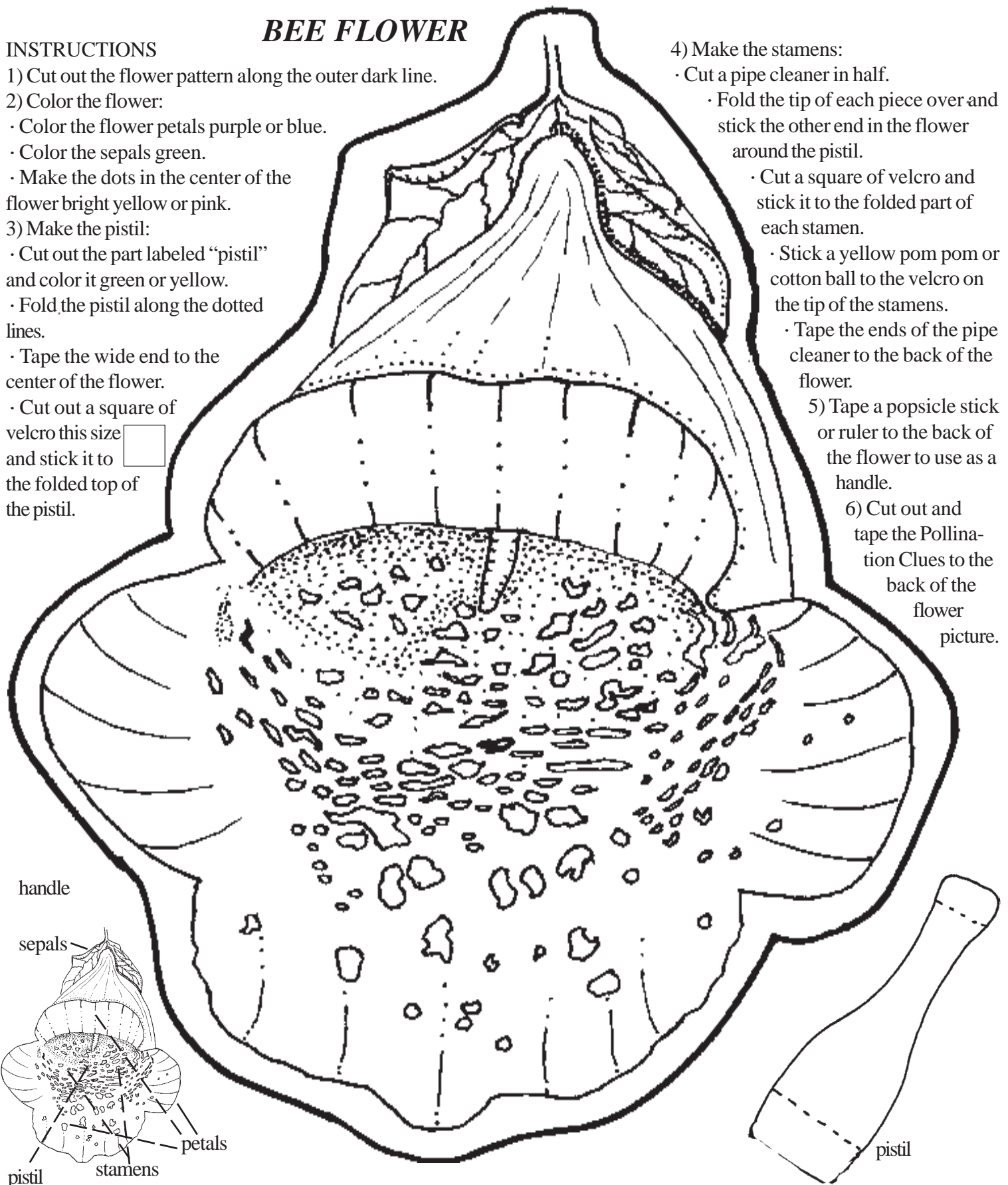
- Cut out a square of velcro this size  and stick it to the folded top of the pistil.

4) Make the stamens:

- Cut a pipe cleaner in half.
- Fold the tip of each piece over and stick the other end in the flower around the pistil.
- Cut a square of velcro and stick it to the folded part of each stamen.
- Stick a yellow pom pom or cotton ball to the velcro on the tip of the stamens.
- Tape the ends of the pipe cleaner to the back of the flower.

5) Tape a popsicle stick or ruler to the back of the flower to use as a handle.

6) Cut out and tape the Pollination Clues to the back of the flower picture.



POLLINATION CLUES (BEE FLOWER)

I have ultraviolet “nectar guides” to show my pollinator where to find nectar .

I have a landing pad for my pollinator to land on.