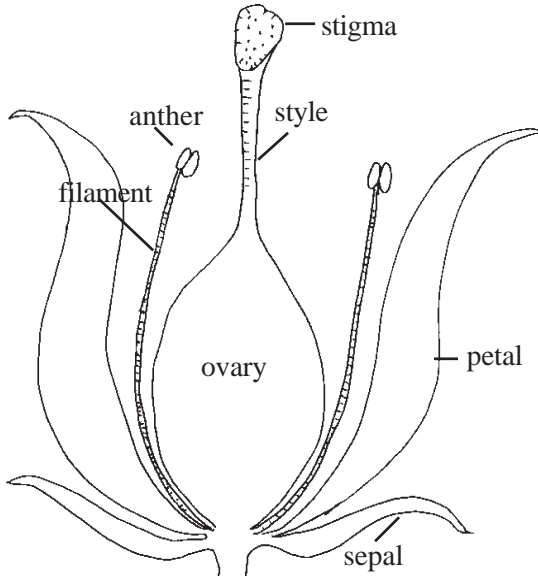


# STUDENT HANDOUT - FLOWER PARTS PAGE

Take apart two or three different flowers and tape the parts in the right squares. Use the picture to help you find the parts.



Male parts (stamens)  
anther (makes pollen)  
filament

Female parts (pistil)  
stigma  
style  
ovary (eggs inside)

**petals**

**male parts**

**female parts**